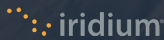




**SDL-350** - The SKYTRAC Satcom System  
Optimized for Broadband Speeds; Unlock  
Iridium Certus® Today

UP TO  
**352**  
Kbps  
UPLINK

UP TO  
**704**  
Kbps  
DOWNLINK

 Value-Added Partner to Iridium®

Enabling Satcom capabilities in challenging industries and environments has been the cornerstone of SKYTRAC’s business success since the company was founded in 1986.

Our flagship satellite transceiver and on-board server harnesses the world’s only true pole-to-pole satellite network, allowing operators 99.9% global uptime. This reliability allows mission-critical operations in EMS, SAR, offshore oil and gas, scientific exploration, military, and scheduled airline industries to perform when the mission gets tough.

SKYTRAC has over 7,500 users around the globe on all seven continents, and ensures long-term support to all customers and partners. Our AS9100D designation ensures leading global brands can trust our systems to perform reliably. In addition, we have cultivated strong partnerships with major OEMs across the globe.

**Discover SKYTRAC**  
Over its 35 year history, SKYTRAC has become the partner of choice for data-guided business insights. As an Iridium Aviation Partner, SKYTRAC is well-positioned to leverage Iridium Certus broadband to provide operators with leading capabilities.

**Key Figures**

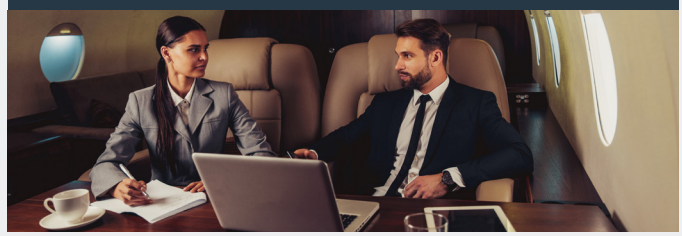
<b>SATCOM Expertise</b>	35+ Years
<b>SKYTRAC Users</b>	7,500+ Users
<b>Systems Certified</b>	900+ Airframes
<b>Global Presence</b>	7 Continents / 100+ Countries



SKYTRAC is part of the ACR Group of companies.



**Applications:** Fire Attack Data for Aerial Firefighting



**Applications:** IFE for VIP and Business Users

## SDL-350 CAPABILITIES

SKYTRAC'S 2-MCU Satellite Data Unit, the SDL-350, features bold new capabilities and a 150x multiplier in bandwidth set to enable the next generation of pole-to-pole connectivity. The SDL-350 facilitates live video streaming, telemedicine, in-flight entertainment (IFE), and advanced graphical weather to the cockpit. Track fleet activity across the globe, automatically detect in-flight events, and capture robust data to feed your FOQA, MOQA, SMS and other operations systems.

### Capabilities include:

- Live Video Streaming
- Telemedicine
- FDR Streaming
- Image & Large File Transfer
- EO/IR Imaging
- Flight Data Acquisition
- VoIP Communications
- Fire Attack Data for Aerial Firefighting
- Graphical Weather
- IFE for VIP & Business Users
- Integrated Wi-Fi & Cellular Connectivity

**Don't see what you're looking for?** To learn about custom application development, contact [sales@skytrac.ca](mailto:sales@skytrac.ca)

## INDUSTRY SEGMENTS

### The #1 Option for Global L-Band SATCOM

SKYTRAC serves the largest organizations in multiple industry verticals. With 7,500+ global customers on all seven continents, we ensure our products and services are highly reliable and are trusted by those that depend on us for mission-critical applications. Our solutions are designed for both fixed-wing and rotary-wing applications.

### We serve the following industries:

- Aerial Firefighting
- Airlines
- Business Aviation
- Emergency Medical Services
- Government
- Law Enforcement
- Military & Coast Guard
- Scientific Exploration & Research
- Search and Rescue
- Tourism
- UAV

**Do you need STCs for your aircraft?** To learn about STC development, contact [sales@skytrac.ca](mailto:sales@skytrac.ca)

## ACCESSORIES

### MULTI TOUCH CONTROL (MTC-100)

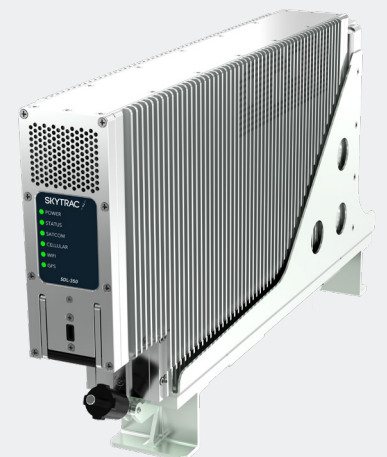


SKYTRAC's MTC-100 is a cockpit or cabin interface for connecting air and ground crews via satellite voice and text. The system includes pre-programmable speed dial numbers, customizable screens for operator and mission-critical applications, NVIS compliance for use in night-time conditions, and more.

### INFLIGHT CAMERAS (CRU-200)



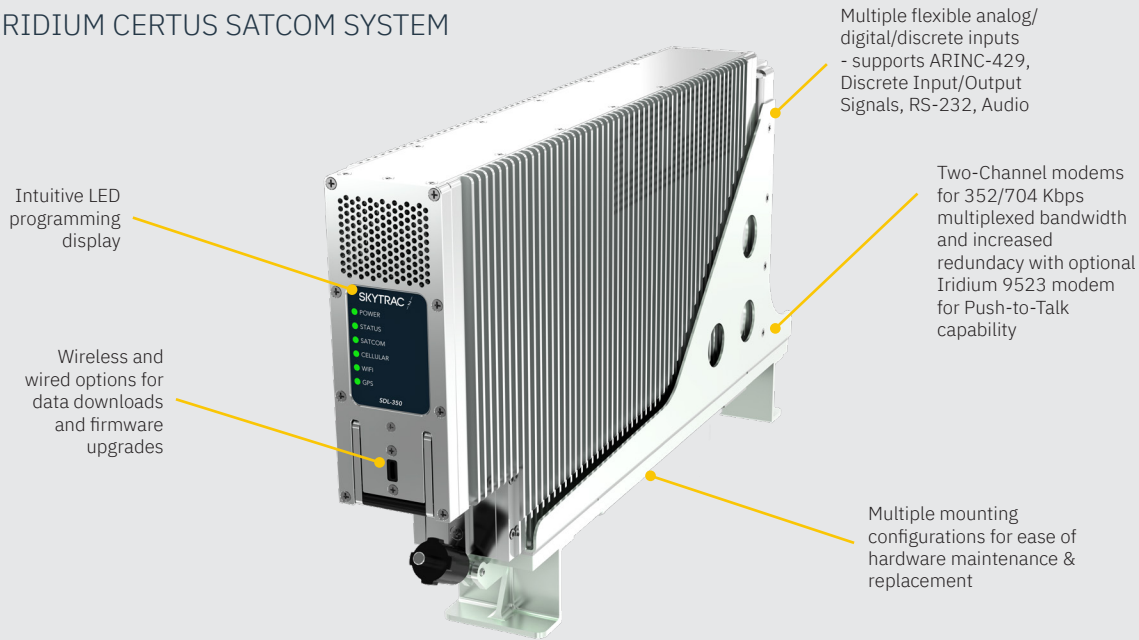
Discreetly record hours of high-resolution cockpit audio-visuals to enhance your flight data monitoring program. Pair with multiple lenses in any combination.



For more information, contact a connectivity expert at [sales@skytrac.ca](mailto:sales@skytrac.ca)

# SDL-350-02 DATA SHEET

## 2-MCU IRIDIUM CERTUS SATCOM SYSTEM



Intuitive LED programming display

Wireless and wired options for data downloads and firmware upgrades

Multiple flexible analog/digital/discrete inputs  
- supports ARINC-429, Discrete Input/Output Signals, RS-232, Audio

Two-Channel modems for 352/704 Kbps multiplexed bandwidth and increased redundancy with optional Iridium 9523 modem for Push-to-Talk capability

Multiple mounting configurations for ease of hardware maintenance & replacement

## PRODUCT SPECIFICATIONS

### IRIDIUM SERVICES

Iridium Certus, SMS, SBD, PTT

### POWER CONSUMPTION

28 V power

### DIMENSIONS

H x W x D = 7.64" x 2.25" x 12.76" (Mounted)

### WEIGHT

6.0 lbs (2.72 kg)

### ENVIRONMENTAL TESTS

DO-160 Revision G

### TECHNICAL INTERFACES

GPS/GNSS

Audio Interfaces

Multiple Ethernet Interfaces

Multiple ARINC-429 Tx/Rx

ARINC-717 Rx

Multiple Serial (RS-232, RS-485)

Multiple Discrete (I/O)

Analog Inputs

### COCKPIT OPERATIONS





- Aircraft Tracking & Monitoring
- Real-Time Alerting
- Electronic Flight Bag Automation
- Embedded Wi-Fi Access Point
- Intelligence Reconnaissance
- Live Video Streaming
- Real-Time Graphical Weather

### SAFETY SERVICES

- ACARS over IP
- Black Box Streaming
- Push-to-Talk (PTT) Voice

## IRIDIUM CERTUS ANTENNAS

SKYTRAC-designed antennas offer a variety of data rates, interfaces, and dimensions, based on your operational profile.

Antenna Class	Description	Data Rates	Interface	Dimensions	Weight
Passive LGA	 Iridium Certus Puck Antenna	176 Kbps (Bi-directional)	Single Coax <2 meters	3.5" diameter (8.89 cm)	141 g (5 oz.)
Passive LGA	 Dual Element Iridium Certus/GPS Antenna	2.4 Kbps (GPS, PTT, SBD) (Bi-directional)	Single Coax <2 meters	5.00" x 2.20" x 0.72" (19.94 cm x 7.62 cm x 4.95 cm)	240 g (8.5 oz.)
Active LGA	 Active Low Gain Antenna	176 Kbps (Bi-directional)	Single Coax <10 meters	7.85" x 3.00" x 1.95" (12.70 cm x 5.59 cm x 1.83 cm)	1.36 kg (3.00 lbs.)
High Gain Antenna	 Phased Array, High-Gain Antenna	352/704 Kbps Tx/Rx	Single Coax <10 meters	9.10" x 4.34" x 2.25" (23.10 cm x 11.02 cm x 5.72 cm)	1.36kg (3.00 lbs.)

Specifications subject to change. Contact sales@skytrac.ca for latest revision.